



Data Sheet

Features

View and control student computers in a networked classroom

Supports multiple groups (classrooms)

Share Instructor's screen with students in the classroom, or a screen of one of students with others

Keep discipline in the classroom: restrict access to web, applications, system settings and hardware

Manage student computers right from the teacher's seat: turn on, shutdown and reboot computers; manage programs and applications

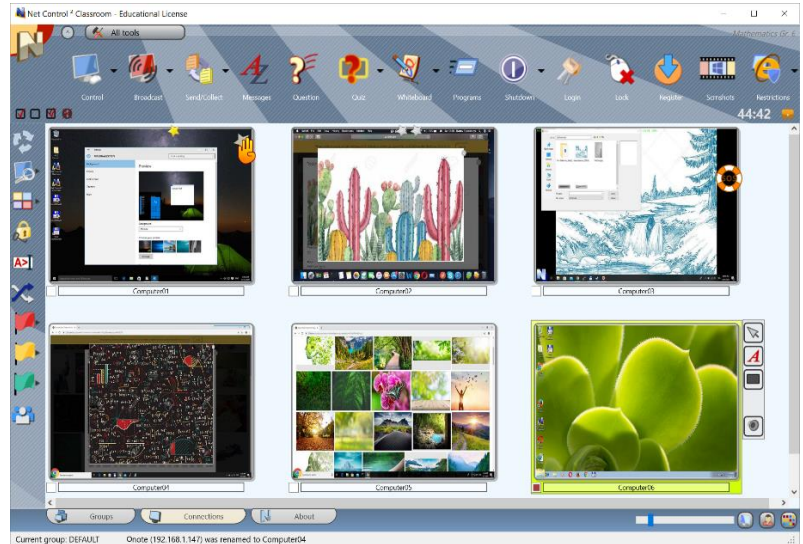
Send text messages, graphics, screenshots in a few clicks; initiate text and voice chats

Get instant statistics on student knowledge with Polls and Quizzes

Use built-in lesson management tools: planner, lesson and grade journals.

Extend functionality and customize the software with macros and custom profiles.

Share your ideas with students using Virtual Whiteboard



Classroom management software

Net Control 2 Classroom is classroom management software for local networks, has a 22-year history of development and use. Created by teachers and for teachers. Used in thousands of locations worldwide.

Powerful, flexible and cost-effective solution for education customers.

Helps teachers to use lesson time more effectively, improves quality of the teaching process, makes it more visual and interesting to students.

Why

Net Control 2 Classroom

Specially designed for the sphere of education, provides access to more than 150 various teaching, monitoring and controlling features.

Easy in use and installation. Provides ways of centralized deployment to multiple computers in domain environment.

Both effective in small classrooms and large school networks.

Flexible in adaptation for different use scenarios.

One of the best in the industry cost of licensing, effective as for small labs as for large organizations that use hundreds and thousands of computers. No subscriptions. All licenses are always permanent.

Comprehensive support and long free maintenance periods.

System requirements

Microsoft Windows 11, 10, 8, 7 (64- and 32-bit Editions), Windows Server 2022 – 2008.

Linux Ubuntu 20.04 – 22.04 LTS, Debian for x86-64 (amd64)

macOS 10.8 - 12 (Mountain Lion - Monterey)

Virtual machines that support the above specified operating systems as a "guest" OS, including **Microsoft Hyper-V Server, VMWare, Oracle VirtualBox, nComputing, Citrix, Wyse** virtual machines.

Terminal Server ("thin") clients of Windows Terminal Server/Remote Desktop Server, nComputing, Wyse and other terminal clients that use Windows user session virtualization.

Network: Ethernet or wireless local network 100 Mbit/sec and higher. Other local network realizations that support TCP/IP v4 and UDP protocols and required network bandwidth.

Bandwidth: 0.005-0.2 MBit/s per client: low-traffic operations - 0.01 MBit/s; direct full-screen control with keyboard and mouse - 0.2 MBit/s; broadcast teacher's screen to students - 0.15 MBit/s either for all recipients (Multicast is supported) or per client.

CPU and RAM: use the recommended by the manufacturer of the operating system hardware configuration for this OS version.

Disk space: at least 350 Mbytes of free disk space per installation.

Technical support and maintenance

All licenses are permanent for the purchased version of the software. Net Control 2 Classroom licenses include two years of free upgrades and maintenance from the moment of purchase. After the free upgrade period, paid upgrades are available with 30-50% discounts. Such paid upgrades are optional and not required unless you need access to new versions and features. Actual upgrade policies are available on our website: <https://www.netcontrol2.com/upgrade>

The technical support is included and free without time limitations. After the free maintenance period we may be limited in ways of modifying of the older versions program code.

Trial and evaluation licenses are always available by request on our website: <https://www.netcontrol2.com/downloads>

Any your questions are always welcome at <https://ask.netcontrol2.com>

<https://www.netcontrol2.com>