



## Data Sheet

### Features

#### View and control student computers in a networked classroom

Provides advanced management of groups (classrooms), users, privileges

#### Share Instructor's screen with students in the classroom, or a screen of one of students with others

Keep discipline in the classroom: restrict access to web, applications, system settings and hardware

#### Manage student computers right from the teacher's seat: turn on, shutdown and reboot computers; manage programs and applications

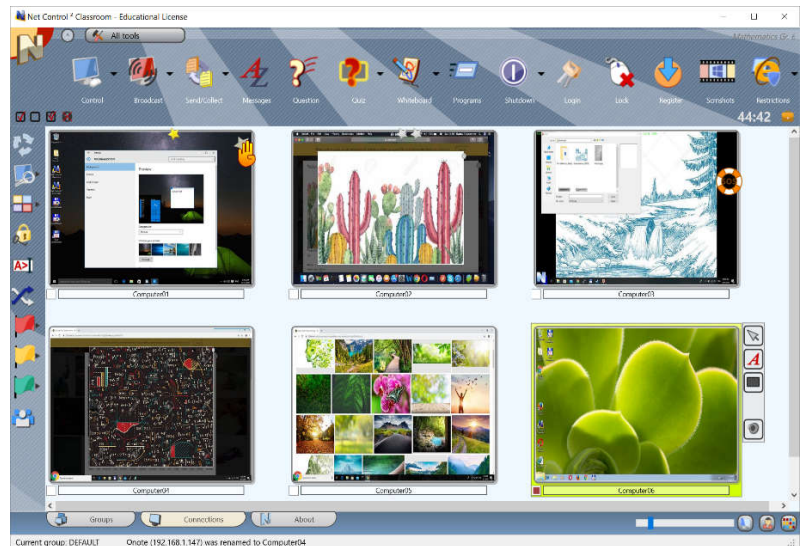
Send text messages, graphics, screenshots in a few clicks; initiate text and voice chats

#### Get instant statistics on student knowledge with Polls and Quizzes

Use built-in lesson management tools: planner, lesson and grade journals.

#### Extend functionality and customize the software with macros and custom profiles.

Share your ideas with students using Virtual Whiteboard



### Classroom management software

**Net Control 2 Professional** is classroom management software for local networks, has a 20-year history of development and use. Created by teachers and for teachers. Used in thousands of locations worldwide.

Powerful, flexible and cost-effective solution for education customers.

Helps teachers to use lesson time more effectively, improves quality of the teaching process, makes it more visual and interesting to students.

# Why

## Net Control 2 PRO

**Specially designed for the sphere of education, provides access to more than 150 various teaching, monitoring and controlling features.**

Easy in use and installation. Provides ways of centralized deployment to multiple computers in a domain environment.

**Specially designed for large networks, BYOD and 1:1 environment. Includes sophisticated tools for managing classrooms, computers, users and teacher accounts.**

Flexible in adaptation for different use scenarios.

**The pricing model is specially adapted for extensive licensing and offers one of the best in the industry per computer license cost. No subscriptions. All licenses are always permanent.**

# System requirements

**Microsoft Windows** 10, 8, 7 (64- and 32-bit Editions), Windows Server 2019 – 2008.

**Mac OS X** 10.8 - 10.15 (Mountain Lion - Catalina)

**Virtual machines** that support the above specified operating systems as a "guest" OS, including **Microsoft Hyper-V Server, VMWare, Oracle VirtualBox, nComputing, Citrix, Wyse** virtual machines.

**Terminal Server ("thin") clients** of Windows Terminal Server/Remote Desktop Server, nComputing, Wyse and other terminal clients that use Windows user session virtualization.

**Network: Ethernet or wireless local network** 100 Mbit/sec and higher. Other local network realizations that support TCP/IP v4 and UDP protocols and required network bandwidth.

**Bandwidth:** 0.005-0.2 MBit/s per client: low-traffic operations - 0.01 MBit/s; direct full-screen control with keyboard and mouse - 0.2 MBit/s; broadcast teacher's screen to students - 0.15 MBit/s either for all recipients (Multicast is supported) or per client.

**CPU and RAM:** use the recommended by the manufacturer of the operating system hardware configuration for this OS version.

**Disk space:** at least 150 Mbytes of free disk space per installation.

# Technical support and maintenance

**All licenses are permanent** for the purchased version of the software. Net Control 2 PRO licenses include two years of free upgrades and maintenance from the moment of purchase. After the free upgrade period, paid upgrades are available with 30-50% discounts. Such paid upgrades are optional and not required unless you need access to new versions and features. Actual upgrade policies are available on our website: <https://www.netcontrol2.com/upgrade>

**The technical support is included and free without time limitations.** After the free maintenance period we may be limited in ways of modifying of the older versions program code.

**Trial and evaluation licenses are always available by request** on our website: <https://www.netcontrol2.com/downloads>

Any your questions are always welcome at <http://ask.netcontrol2.com>

**<https://www.netcontrol2.com>**